

# What would it take to send a team to Chile?



Assemblies of God World Missions Project 8343

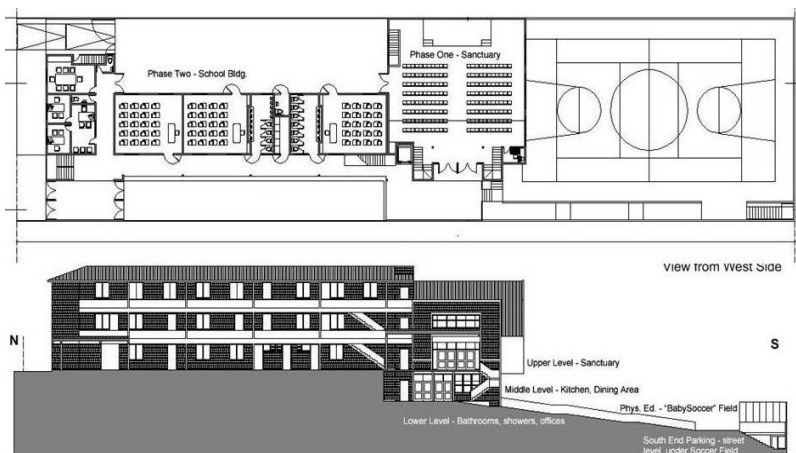
## The Santiago Children's Ministries Outreach Center

Information for Volunteer Teams / 2016

The largest unreached people group in the world today is children. The **4-14 window** (ages 4 to 14) represents the biggest challenge as well as the biggest opportunity in missions today. The **Santiago Children's Ministries Outreach Center** reaches out to children at risk in Santiago, Chile with the Gospel of Jesus Christ in tangible expressions of God's love.

### Project Description -

The project consists of two adjacent buildings and an athletics field, on an 80 x 20 meter site in urban Santiago. **Phase One** is a three-story unit with (top to bottom) sanctuary, kitchen & cafeteria area, bathrooms & offices. **Phase Two** will be a three story elementary school building (left side of drawing). The construction is metal structure with brick exterior walls. The lower, walk-in basement levels are solid reinforced concrete walls. The interior walls will be metal stud/sheetrock. **Phase Three** will be an athletics field with a parking garage beneath. This project is endorsed by **Builders International** and **Assemblies of God World Missions** as the **Regional Impact Project** for Latin America. You can read more about this at <http://buildersintl.org/>.



### Timetable -

Volunteer construction teams are urgently needed. The months of July and August are not ideal since it is winter in the southern hemisphere then, and the chances of being rained out are high. However, interior work may still be done at that time.

### Travel Information -

- Passport** - All US citizens who travel to Chile must have their own passport. If the passport is within six months of its expiration date it may not be accepted at Chilean immigration.
- Visa** - Tourist visas are granted in the airport in Santiago, at no charge, and need not be applied for prior to the travel date. You just show up.
- Vaccinations** - No special vaccinations are required for entry to Chile. Isn't God good?
- Insurance** - All team members must apply for the supplementary health insurance offered through Assemblies of God World Missions.
- Electrical current** - Chile uses 220 volt electricity. It is most preferable to bring multi-voltage chargers for phones, laptops, etc (Input 100-240 volt).

### Costs -

- Airfare** - Denver / Santiago (RT) runs from \$1,200 - 1,600 per person, depending on the season, fuel costs, etc. It is always best to get a group rate and to buy tickets early. Recommended airlines: American Airlines, Lan Chile, United, Delta. All these offer daily non-stop flights from the US to Santiago.
- Transportation** - airport to hotel and back, trip to the ocean - \$30.00 per person, one-time..
- Hotel / Meals / Daily Transportation to job site** - \$100 per day per person. Rate implies sharing a double with one other traveler. Three meals included in this price. Breakfast will be eaten at the hotel, lunch at the job site, supper at different restaurants in Santiago.

### Summary of Costs -

Here is a sample **hypothetical** budget for a volunteer construction team member coming to Chile for a ten-day stay.

Air fare	\$ 1,500 (exit tax included)
Airport/hotel Transportation	\$ 30
Lodging, food, transp. for ten days	\$ 1,000
<b>Total</b>	<b>\$ 2,530</b>

### Building Materials Funding -

Each team that comes to Chile should, along with providing laborers, contribute to the purchasing of the building material (cement, steel, lumber, hardware, etc.) which the team will be working with during their stay. Over fifteen years of experience working with volunteer teams has shown us that often a team will, during a 10 day stay, go through about \$500.00 or more worth of material for every member of the team. In other words, a twenty-member team can often go through \$10 K worth of building materials. If we run out of building material, the team's work obviously will grind to a halt.

Please, come and help us!!!



**FOR MORE INFORMATION:**  
Write to: [jim.mazurek@agmd.org](mailto:jim.mazurek@agmd.org)  
Visit: [www.reachingandraising.com](http://www.reachingandraising.com)



**THANK YOU FOR HELPING US REACH BOYS AND GIRLS WITH THE GOOD NEWS OF CHRIST!**